

BIO TIME

Medical Training Models

Catalog 2022-2023

Thinking Ahead

INDEX

6	BIOTME	10	PRODUCTS	14	SAEM	82	DEVELOPMENTS	84	INFORMATION NOTES
---	--------	----	----------	----	------	----	--------------	----	-------------------

BLOTTING

6

BIOTME

Biotme is an innovative technology-based company that operates in the health sector, committed to research, development and the manufacture of physical medical training equipment and anatomical simulators that provide skills and abilities to health professionals in cutting-edge medical techniques.

Evolution and progress are the engine of the society in which we live, therefore, at BIOTME we are firmly committed to contributing to the continuous improvement of people's health care. We achieve this by betting on I+D+i, developing and offering innovative equipment and solutions to the market, with the ability to adapt to the needs of the different actors who are protagonists of the health value chain.

THINKING

MEDICINE AND ENGINEERING

Biotme was born in 2017 when its founders detected needs in the health sector. The medical equipment offered to the market is constantly improving, the means and resources are getting renewed, technology is always advancing, offering techniques to detect and intervene in injuries that are increasingly more effective, but at the same time, more complex. So that these new techniques and equipment can be implemented in a generalized and safe way, doctors must know how to use them and the possibilities to apply them in their professional work. But, how do they do it if they don't have practice equipment that adapts to those needs?

That is why Biotme was born, to offer the health sector a wide range of anatomical medical training simulators, manufactured with a self-developed gelatin that simulates different tissues of the human body, allowing doctors to practice on them repeatedly, instead of doing it on corpses or animals.

The essence and soul of our brand is fully based on the synergy between engineering and medicine, two disciplines in which the most important thing is change and progress. For this reason, our team is committed to and promotes the continuous improvement of the health sector and the cutting-edge training of its professionals, always seeking to improve ourselves, anticipating the needs of the sector.

AHEAD

FOUNDING

2017

At the Badajoz Science Park, we developed a synthetic gelatin that, with additives, has an ecorefringence similar to that of any tissue in the human body. Base material for our medical trainers or simulators.

2018

We developed a thermoplastic composite that was formed at a low temperature to be used for the manufacture of splints. We began the study of this application to forearm pathologies

2019

We focus 80% of our resources on the development of medical simulators, mainly endovascular, focused on learning diagnostic and interventional techniques.

We entered the La Atalaya accelerator, in Badajoz, of the Junta de Extremadura and Telefónica.

2020

It represented an important qualitative leap in our company. We ensure that the base gel of our simulators is sustainable, placing our company within the circular economy.

We developed and made available to the market a portfolio of increasingly complex medical training anatomical simulators, used to practice different techniques under ultrasound, radiological and tomographic control.

We began to make our first sales within the national market.

2021

We developed our first complementary equipment for simulation.

We started the development of a 3D printer for our gel.

Together with the University of Extremadura and Rase Ibérica, we patent thermoformable orthoses with electrostimulation.

We enter the Fourth Edition of the La Nave accelerator, of the Madrid City Council.

We signed an agreement with the INMA Research Group of the Uex, for the development of materials for medical applications.

2022

We aim to expand our sales network in Central Europe and some Latin American countries.

We want our gel, in addition to being sustainable, to be biocompatible.

We have started to develop a 3D printer that will allow us to develop more complex simulators.

We intend to develop simulators that include software that allows the learning curve to be recorded.

Currently, two utility models are being processed.

10

PRODUCTS



At Biotme we focus our activity on the development and manufacture of anatomical medical training simulators, offering various ranges and models that are available on the market and present in our catalogue, in addition to models manufactured on demand, meeting the needs of the actors involved in improving people's health. We attend to the demands of each of our clients, because we know that each of them is unique, which is why our simulators are also unique.

We offer endovascular simulators, cancer detection simulators, anesthesia simulators, clinical skills simulators, etc. In addition to more complex simulators designed to carry out specific and innovative practices, since, thanks to our capacity and short production time, we can guarantee the manufacture of a personalized, innovative and effective medical simulator in record time.

The material that gives our simulators unique characteristics is a self-developed synthetic gel that guarantees the greatest functional realism that can be offered, being faithful not only in touch and sensations to the human body, but also in the responses of ultrasound equipment, radiological and tomographic.

In this way, and thanks to the great reliability of our products, the medical professional can acquire the skills and abilities necessary to care for the patient with a greater guarantee of success, which results not only in a better medical service, but also in the quick recovery of the patient, as well as in a lower cost of the interventions and the subsequent control.

SAEM

They incorporate a simile blood developed by BIOTME that has a Hounsfield unit similar to human blood.

With different formats, we adapt the size and shape of the SAEM to the technique to be used. We have standard simulators with various sizes, fully configurable in terms of lesions, number, diameter and depth of pathways, etc., and simulators with a human anatomical shape.

We are manufacturing simulators that, assisted by ultrasound equipment, help to practice central line cannulation, for PICC peripheral insertion venous catheterization, stent placement, etc.

We have the flexibility to develop and manufacture any injury or configuration within the range of simulators that we have.

Depending on the type of practices to be carried out, they can be repeated hundreds of times on the same equipment using needles no larger than 21G. They are washed with soap and water and do not require any special storage or conservation conditions.



1. SAEM-S
Basic Anatomical Medical Training Simulators
2. SAEM-M
Basic Anatomical Medical Training Simulators
3. SAEM-L
Anatomical Medical Training Simulators with
Ailments pathologies
4. SAEM-E
Anatomical Medical Training Simulators for Special
Techniques
5. SAEM-A
Anatomical Medical Training Simulators of various
models
6. ACCESORIES
Accesories and Complementary Products
7. ACCESORIES
Accesories and Complementary Products

Our Anatomical Medical Training Simulators, SAEM, are a powerful tool for health personnel to carry out ex vivo practices to acquire competencies and skills in diagnostic and interventional techniques, such as ultrasound-guided techniques, taking vias, assessment of calcifications or atheromas, fissures or fractures, etc., beyond what are practices with corpses or animals, being able to perform the same technique repeatedly on the same simulator before facing a patient. One of our differentiating factors is that the traces of the punctures disappear after a few days of practice with the simulators (caliber less than 21G).

Manufactured with a synthetic gel of our own development, we have achieved that the ecorefringence of the material, as well as its excellent radiographic or computed tomography response, allow us to offer the market a wide variety of simulators.

Our SAEM, which have vascular systems, DO NOT have any type of silicone, latex, etc. conduit. allowing to distinguish between veins and arteries, with a luer-lock connection that allows the circulation of our Simile Blood. This means that when the simulator is pressed with the hand or the head of an ultrasound machine, the vein collapses, returning to its initial shape when the pressure recedes. This does not happen with the arteries, since they do not collapse under pressure.

SAEM-S

Snod - Simulator with nodules	20
Scex - Foreign body simulator	20

SAEM-M

M2vp - Simulator with 1 peripheral line and 1 branch line	26
Macf - Simulator with two femoral access routes	26
Mcex - Strange Objects simulator	30
Mnod - Simulator with nodules	30
M3rd - Simulator with 3 branched channels	32
M4vs - Simulator with 4 superimposed central lines	32
Mios - Intraosseous Vascular Access Simulator	32
Mfis - Simulator with 1 artery & 1 vein with 3 fistulas	34
Msel - Simulator for Seldinger technique	34

SAEM-L

Lane - Central access simulator with aneurysms	40
Lcal - Dental access simulator with calcifications	40
Lfca - Femoral access simulator with calcifications	40
Lfan - Femoral access simulator with aneurysms	42
Lfis - Two-way simulator with fistulas	42

SAEM-E

Epicc - Simulator for PIC and Midline techniques	48
Elas - Simulator for laser thermal ablation of varicose veins	52
Eini - Simulator for intramuscular injections	56
Ealm - Pack of ultrasound pads	58

SAEM-A

Amam - Breast simulator with pathologies	62
Aimg - Intramuscular injection simulator in the buttocks	64
Atecu - Simulator kit for amniocentesis practice	66

SAEM-R

Rpic - Spare Saem-Epic Module	70
Rlas - Spare Saem-Elas module	70
Rven - Spare Saem-Epic veins	70
Rpla - SAEM-Tecu placenta replacement	72
Rmus - Saem-Tecu Spare Muscle Layer	72
Rmem - Spare 3 units skin SAEM-Tecu	72
Ramn- Replacement 10 units amniotic sac SAEM-Tecu	72
RM - Spare simulator SAEM-M line	74
RL - Spare simulator SAEM-L line	74

SAEM-C

Cssan - Blood like bottle - 125ml o 250ml	78
Cgel200 - Ultrasound gel bottle - 200ml	78

SAEM-S

BASIC

The SAEM-S line of mini simulators for CT, Rx and Ultrasound examination practices to support diagnosis under ultrasound and radiological control, are made with a material that meets the most demanding requirements for training, provides tactile feedback, depending on the models.

In this range of simulators, we focus on technical skills, such as detection of nodules, foreign bodies, intramuscular injections, etc.

Depending on its use and not using needles with gauges greater than 21G, hundreds of punctures can be made. In these conditions the trace of these disappears after a few days.

MODELS

- Simulators with foreign bodies of different nature.
- Simulators with different types of nodules



SAEM-Snod

It allows the location and assessment of nodules using ultrasound and radiological techniques. It contains five nodules of different nature and sizes. Compact, does not degrade over time, not losing volume.

Similar products	Practices
SAEM-Mcex M line: Strange objets	1.Detection of nodules of three different types 2. Approach for removal of cyst fluid Use >G21 needles.

SAEM-Scex

Allows the location and assessment of foreign bodies. Contains a pin, a bullet and a splinter. Compact, does not degrade over time, not losing weight or volume. Not suitable for extracting objects without damaging the trainer.

Similar products	Practices
SAEM-Mcex M line: strange objets SAEM-Snod S line:nodules	1. Location and assessment of foreign bodies

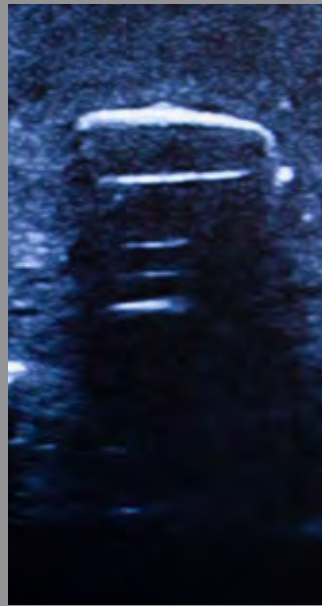
[RETURN TO INDEX](#)

*See conditions of use and maintenance at the end of this catalog

SAEM-S



SAEM-Scex
Object: Bullet



Request product price at info@biotme.com
or by WhatsApp at +34 924 554 135

SAEM-M

BASIC

The line of medium-sized simulators that we offer, SAEM-M, as well as the SAEM-S simulators, are used for practice of examinations carried out with CT, Rx and Ultrasound to support diagnosis, under ultrasound and radiological control. Our simulators are made with a material that meets the most demanding requirements for training, provides tactile feedback, and maintains its shape during use. Its versatility and the possibility of being able to configure its parameters, such as height and diameter of veins, arteries, make it a novel product in the practice of medical simulation.

The models with veins and arteries can be recharged and connected to auxiliary equipment through LUER-LOCK connections that allow the connection of fluid circulation electric pumps to visualize with Ecodoppler. Depending on the use that is given and not using needles with calibers less than 21G, depending on the model, hundreds of punctures can be performed, of which the trace disappears four or five days after completion.

The case without the recirculation pump contains:

- PP briefcase.
- RANGE-M simulator
- Bottle of simile blood of 125 ml.
- 200 ml bottle of ultrasound gel.
- Box for accessories (syringes, extension connections.
- Air evacuation and blood replenishment mounting accessory.

In the model of the SAEM-M range with the recirculation pump, the mounting accessory is replaced by the pump with a multifunction tank on a base. USB connection and 5V USB power supply with connection cable. (See illustrative photograph)

MODELS

- Simulators to practice the Selinguer technique
- Simulators for taking central lines, peripheral lines, with overlapping branches, or not, and the possibility of supplying them with lesions such as atheromas, aneurysms or calcifications.
- With capacity for recirculation of simile blood.



Bottle of gel for ultrasound guidance

Simulator

Accessory box

Bottle of simulated blood

Support



*The simulator is delivered with a protective sheet that must be used for its conservation that contains additional information for each simulator

*

All M models have the possibility of ordering with a case. Check prices.

SAEM-M2vp

Allows ultrasound guidance with two veins without a tube, the gelatin itself shapes the pathway. Loaded with simile blood allows to extract and inject liquid. Compact, does not degrade over time, not losing volume. Equipped with double luer-lock outlets with cap. Via diameters of 6 and 8 mm at 20 mm from the simulator surface.

Similar products	Practices
SAEM-M2Vpum 1 peripheral line and 1 branched line with pump.	<ol style="list-style-type: none"> 1. Intravenous channeling. 2. Blood sample collection. 3. ultrasound-guided puncture. 4. Catheter placement.

SAEM-M2vpum

Variant of SIMULATOR SAEM-M2VP, connected to a recirculation pump with adjustable flow (SAEM-Cpum), which allows visualizing the blood flow and carrying out practices with the echodoppler.

Similar products	Practices
SAEM-M2Vp 1 peripheral line and 1 branched line.	<ol style="list-style-type: none"> 1. Location and assessment of foreign bodies

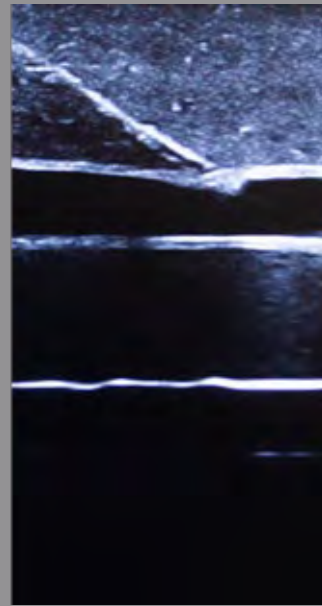
[RETURN TO INDEX](#)

*See conditions of use and maintenance at the end of this catalog

SAEM-M



SAEM-M2vp
Display Image



Request product price at info@biotme.com
or by WhatsApp at +34 924 554 135

Bottle of gel for ultrasound guidance

Accessory box

Bottle of simulated blood

Pump

Simulator

USB feeder



*The simulator is delivered with a protective sheet that must be used for its conservation that contains additional information for each simulator

SAEM-Macf

It allows ultrasound guidance with two bifurcated veins without a tube, the gelatin itself shapes the pathway. Loaded with simile blood allows to extract and inject liquid. Compact, does not degrade over time, not losing volume. Equipped with double luer-lock outlets with cap. The upper track is 25 mm from the surface, having a diameter of 8 mm.

Similar products	Practices
SAEM-M3rd Three branched pathways	1. Intravenous channeling. 2. Blood sample collection. 3. ultrasound-guided puncture. 4. Catheter placement.

SAEM-Mcex

It allows the location and assessment of foreign bodies, embedded in the simulator. Contains a pin, a bullet, a pellet, a metal shard and a splinter. Compact, does not degrade over time, not losing volume. Not suitable for extracting objects without damaging the trainer.

Similar products	Practices
SAEM-Mnod S line: nodules SAEM-Scex S line Strange objets	1. Location and assessment of foreign bodies

[RETURN TO INDEX](#)

*See conditions of use and maintenance at the end of this catalog

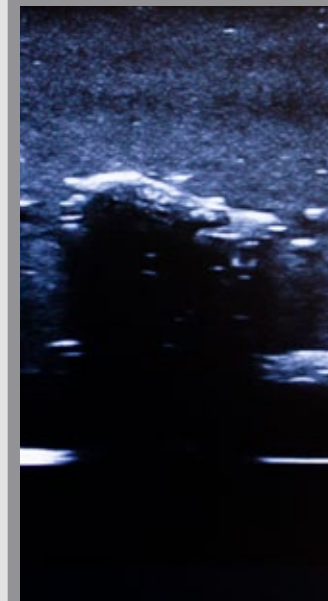
SAEM-M

SAEM-Mnod

It allows the location and assessment of nodules embedded in the trainer, using ultrasound and radiological techniques. It contains ten nodules of different nature and sizes. Compact, does not degrade over time, not losing volume. It is not applicable for biopsies.

Similar products	Practices
SAEM-Mcex S line: Strange objets SAEM-Snod S line: nodules	1. Detection of nodules of three types. 2. Approach for removal of cyst fluid Use >G21 needles.

SAEM-M2vp
Object: wood chips



Request product price at info@biotme.com
or by WhatsApp at +34 924 554 135

SAEM-M3rd

It allows ultrasound guidance with two BRANCHED veins without a tube, the gel itself shapes the pathway. Loaded with simile blood allows to extract and inject liquid. Compact, does not degrade over time, not losing volume. Equipped with double luer-lock outlets with cap. Track diameters of 8-4mm and 8-6mm.

Similar products	Practices
SAEM-M3vc Three central lines SAEM-Macf Two-way femoral access SAEM-M4vs Four central tracks overlapping	1. Intravenous channeling. 2. Blood sample collection. 3. ultrasound-guided puncture. 4. Catheter placement.

SAEM-M4vs

Allows echoguidance with four central lines without a tube, the gelatin itself shapes the line. Loaded with simile blood allows to extract and inject liquid. Compact, does not degrade over time, not losing volume. Two superficial ports equipped with double luer-lock outlets with anti-reflux cap, and the two deeper ports without anti-reflux cap. Via diameters of 8-10 mm, placed at 15 and 35 mm. from the top.

Similar products	Practices
SAEM-M3rd Three branched double tracks	1. Intravenous channeling. 2. Blood sample collection. 3. ultrasound-guided puncture. 4. Catheter placement.

RETURN TO INDEX

*See conditions of use and maintenance at the end of this catalog

SAEM-M

SAEM-Mios

Allows intraosseous vascular access. Loaded with simile blood allows to extract and inject liquid. Indicated for simulation of practices in critically ill patients when an intravenous access cannot be placed. Widely used in cardiac arrest, burns and especially in children. Compact, does not degrade over time, not losing volume. Equipped with double luer-lock outlets with cap. Diameter of the simile bone of 15 and 10 mm. external diameter.

Similar products	Practices
SAEM-Snod S line: nodules SAEM-Scex S line: Strange objects	1. Taking of intraosseous route for extraction of blood, marrow or administration of medications. 2. First aid training.



SAEM-M4vs
Display Image



Request product price at info@biotme.com
or by WhatsApp at +34 924 554 135

SAEM-Mfis

It allows ultrasound guidance of arteriovenous fistulas that allow the circulation of fluids to check their operation. Loaded with simile blood allows to extract and inject liquid. Compact, does not degrade over time, not losing volume. Equipped with double luer-lock outlets with cap. Track diameters of 8 and 10 mm. to 20mm. of the simulator surface.

Similar products	Practices
SAEM-Lfis Connected tracks range L	<ol style="list-style-type: none"> 1. Intravenous channeling. 2. Blood sample collection. 3. ultrasound-guided puncture. 4. Catheter placement. 5. Recognition and localization of graft fistulae

SAEM-Msel

To perform the Seldinger technique with two veins without a tube, the gelatin itself shapes the line. Loaded with simile blood allows to extract and inject liquid. Compact, does not degrade over time, not losing volume. Equipped with double luer-lock outlets with cap. Track diameters of 8 and 10 mm. to 25mm. of the simulator surface.

Similar products	Practices
SAEM-Epic	<ol style="list-style-type: none"> 1. Intravenous channeling. 2. Blood sample collection. 3. ultrasound-guided puncture. 4. Catheter placement.

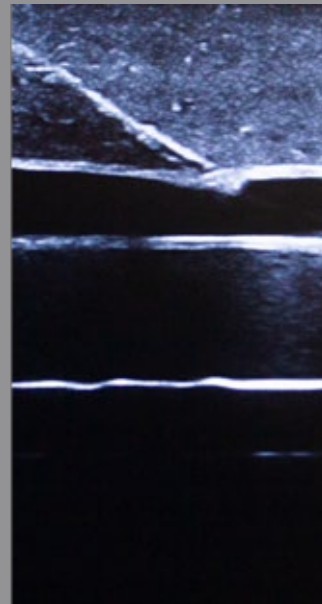
RETURN TO INDEX

*See conditions of use and maintenance at the end of this catalog

SAEM-M



SAEM-Msel
Display Image



Request product price at info@biotme.com
or by WhatsApp at +34 924 554 135

SAEM-L

BASIC AND WITH AILMENTS

The line of size L SIMULATORS that we offer, are similar to the SAEM-M simulators, they are used to carry out practices in diagnostic and interventional procedures under ultrasound and radiological control. They are larger than the SAEM-M range, adding different types of pathologies, such as calcifications, atheromas or aneurysms.

They can be presented with different diameters so that the progress in the technique can be appreciated.

In some models, the pathways can be made with alternative routes to enhance skills in handling catheters.

The set contains:

- PP briefcase.
- RANGE-M simulator
- Bottle of simile blood of 125 ml.
- Bottle of ultrasound gel of 200 ml.
- Box for accessories (syringes, extension connections.
- Air evacuation and blood replenishment mounting accessory.

MODELS

- Simulators to practice the Selinguer technique with the possibility of different catheter trajectories, simulation of veins and arteries at different depths of the puncture area.
- Pathways overlapping with lesions such as atheromas, aneurysms, or calcifications.
- Practices for placement of radial catheters.
- For femoral, central or peripheral access with different possibilities in each simulator.
- With capacity for recirculation of simile blood.



Bote de gel para ecoguiado

Caja de accesorios

Bote de símil sangre

Soporte

Simulador



*The simulator is delivered with a protective sheet that must be used for its conservation that contains additional information for each simulator

SAEM-Lane

For ultrasound guidance with two tubeless veins with simulated aneurysms. The gelatin itself shapes the track. Loaded with simile blood allows to extract and inject liquid. Compact, does not degrade over time, not losing volume. Equipped with double luer-lock outlets with cap. Track diameters of 10 mm.

Similar products	Practices
SAEM-Lcal Two deep pathways with calcifications	1. Assessment and measurement of aneurysms
SAEM-Lfca Femoral access with calcifications	2. Intravenous cannulation
SAEM-Lfa Femoral access with aneurysm	3. Blood sample collection
	4. Echoguided puncture
	5. Catheter insertion
	6. Midline technique and insertion management

SAEM-Lcal

For ultrasound guidance with two tubeless veins with simulation of calcifications. The gelatin itself shapes the track. Loaded with simile blood allows to extract and inject liquid. Compact, does not degrade over time, not losing volume. Equipped with double luer-lock outlets with cap. 10 mm track diameter.

Similar products	Practices
SAEM-Lane Two deep pathways with aneurysm	1. Assessment and measurement of calcifications
SAEM-Lfca Femoral access with calcifications	2. Intravenous cannulation
SAEM-Lfa Femoral access with aneurysm	3. Blood sample collection
	4. Echoguided puncture
	5. Catheter insertion
	6. Midline technique and insertion management

RETURN TO INDEX

*See conditions of use and maintenance at the end of this catalog

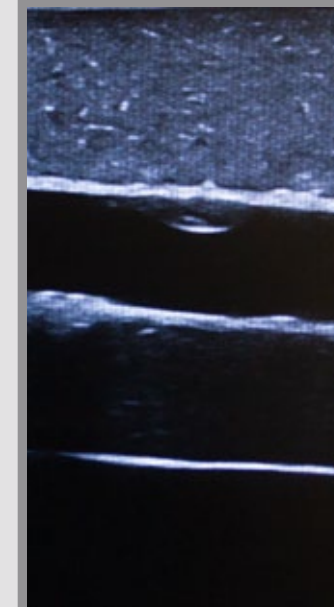
SAEM-L

SAEM-Lfca

For ultrasound guidance indicated in practices of intravenous cannulation, arterial puncture, etc. for femoral access with two vertical branching blood vessels with calcifications for location and assessment. Without a tube, the jelly itself shapes the line. Loaded with simile blood allows to extract and inject liquid. The upper track is 20 mm from the surface, having a diameter of 8 mm. Compact, does not degrade over time, not losing volume. Equipped with double luer-lock outlets with cap.

Similar products	Practices
SAEM-Lane Two deep pathways with aneurysm	1. Assessment and measurement of calcifications
SAEM-Lcal Two deep pathways with calcifications	2. Intravenous cannulation
SAEM-Lfa Femoral access with aneurysm	3. Blood sample collection
	4. Echoguided puncture
	5. Catheter insertion
	6. Midline technique and insertion management

SAEM-Lcal
Calcification



Request product price at info@biotme.com
or by WhatsApp at +34 924 554 135

SAEM-Lfan

For femoral access with two vertical branching blood vessels with aneurysms for location and assessment. Without a tube, the jelly itself shapes the line. Loaded with simile blood allows to extract and inject liquid. The upper track is 20 mm from the surface, having a diameter of 8 mm. Compact, does not degrade over time, not losing volume. Equipped with double luer-lock outlets with cap.

Similar products	Practices
SAEM-Lcal Two deep pathways with calcifications	1. Assessment and measurement of aneurysms
SAEM-Lfca Femoral access with calcifications	2. Intravenous cannulation
SAEM-Lane Two deep pathways with aneurysm	3. Blood sample collection
	4. Echoguided puncture
	5. Catheter insertion
	6. Midline technique and insertion management

SAEM-Lfis

It allows ultrasound guidance of arteriovenous fistulas that allow the circulation of fluids to check their operation. Loaded with simile blood allows to extract and inject liquid. Compact, does not degrade over time, not losing volume. Equipped with double luer-lock outlets with cap. Track diameters of 8 and 10 mm. to 20mm. of the simulator surface.

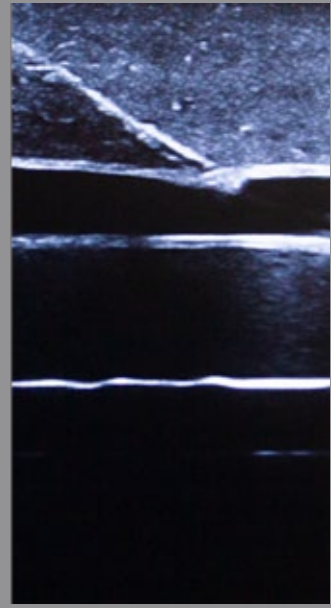
Similar products	Practices
SAEM-Mfis Connected tracks range M	1. Intravenous cannulation
	2. Blood sample collection
	3. Echoguided puncture
	4. Catheter insertion
	5. Recognition and localization of fistulas

RETURN TO INDEX

*See conditions of use and maintenance at the end of this catalog



SAEM-Linc
Display Image



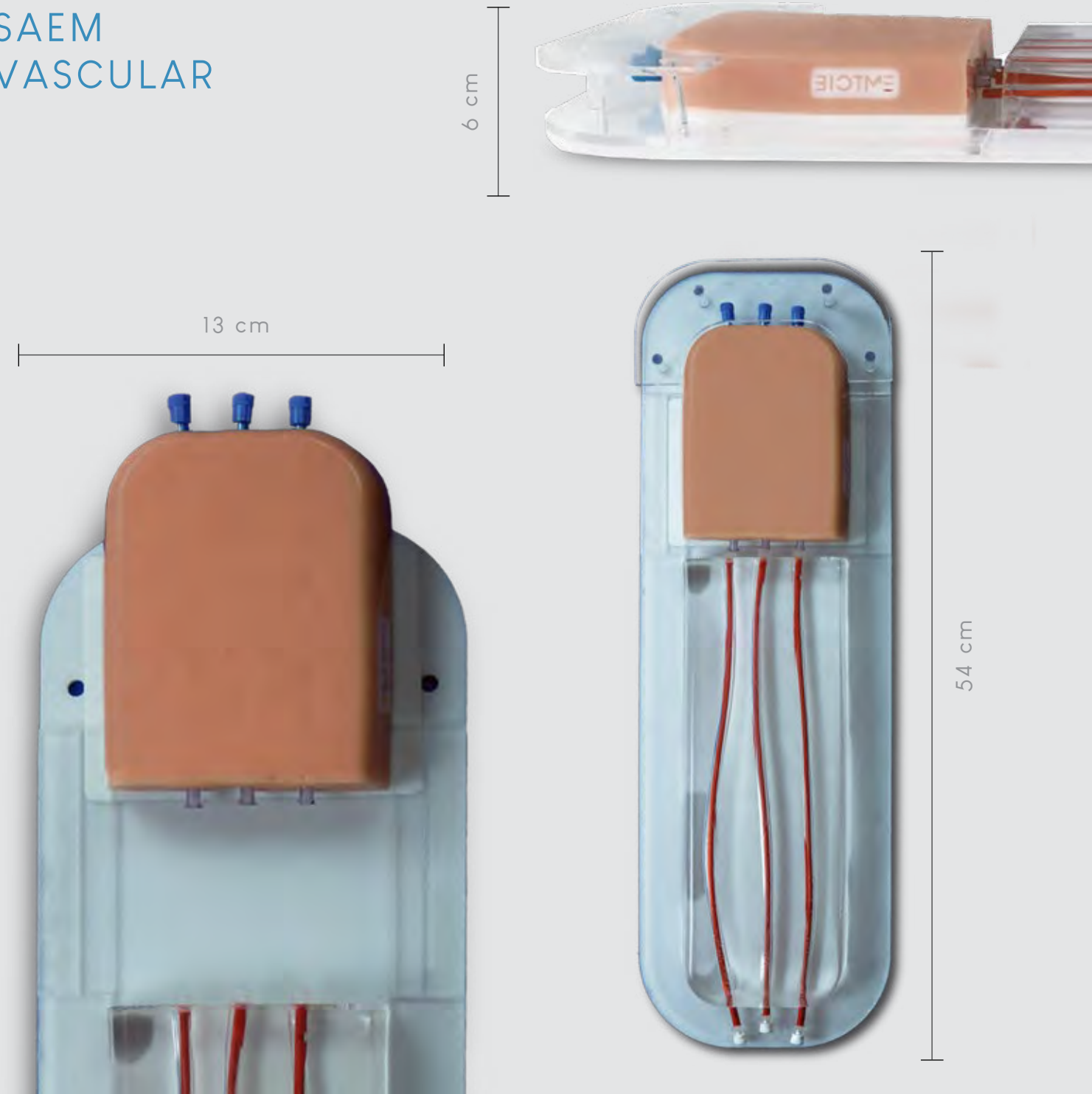
Request product price at info@biotme.com
or by WhatsApp at +34 924 554 135



SAEM-E SPECIAL

Modular simulators for performing different complex techniques, such as laser thermal ablation of varicose veins, complete PICC technique, femoral aortic catheter cannulation. Angioplasty and stent placement in peripheral arteries. Intra-aortic balloon placement. With capacity for recirculation of simile blood.

SAEM VASCULAR



SAEM-Epic

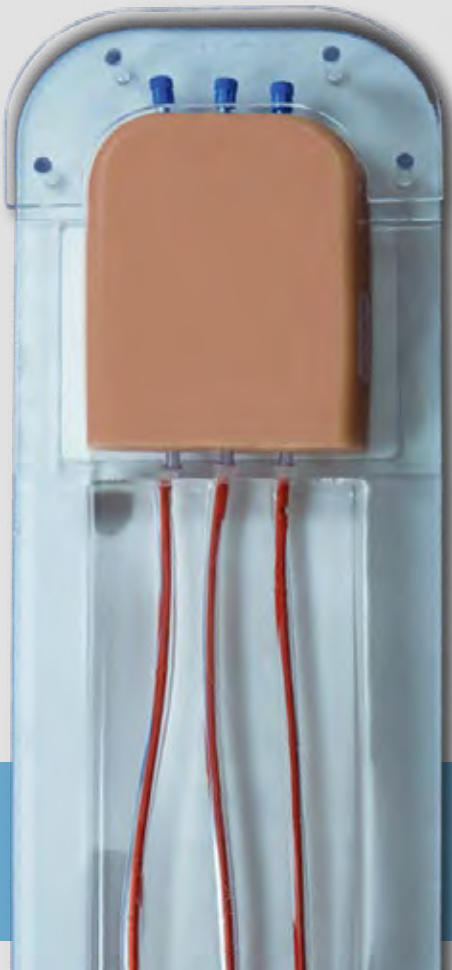
Anatomical medical training simulator for echoguidance, consisting of two modules. The catheter insertion module is ecorefringent for punctures, it has three vessels without a tube, which connect with the three veins with a tube in the visualization module. That the gelatin itself shapes the pathway, for performing vascular access practices through PICC. Located 15mm from the outer surface with 8mm track diameters. Compact, it does not degrade over time or lose volume. Equipped with luer-lock outlets with plugs that allow evacuating or filling liquids, as well as connecting other accessories. Washable with soap and water.

Excellent for developing and acquiring skills in diagnostic procedures under ultrasound or radiological control. The entire catheter insertion module can be replaced for excessive punctures.

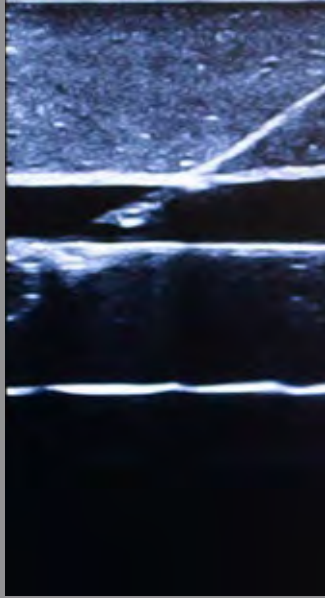
Similar products	Practices
SAEM-Rpic Replacement for Saem-Epic	1. Peripherally inserted central venous catheterization 2. Management of the PICC and Midline technique

RETURN TO INDEX

*See conditions of use and maintenance at the end of this catalog



SAEM-Epic
Display Image



Request product price at info@biotme.com
or by WhatsApp at +34 924 554 135



*The simulator is delivered with a protective sheet that must be used for its conservation that contains additional information for each simulator

SAEM-Elas

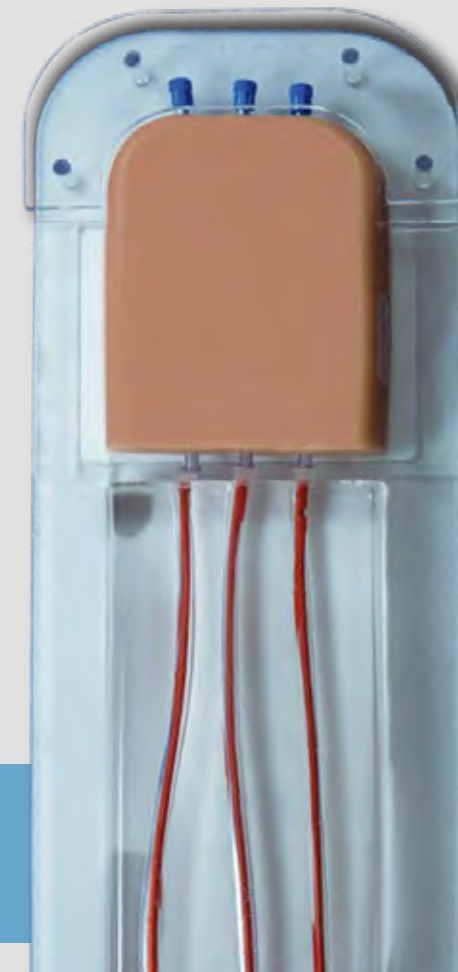
Anatomical medical training simulator for laser ablation of varicose veins. It consists of two modules, module 1, is ecorefringent to perform the punctures, it has three veins that connect with the three veins of Module 2, which is where the ablation is performed. Simulates three veins of 5 mm diameter and 36 cm. of length.

Once the practice has been carried out, the veins can be easily replaced by another, which is supplied separately. Module 1 can be completely replaced due to excessive punctures.

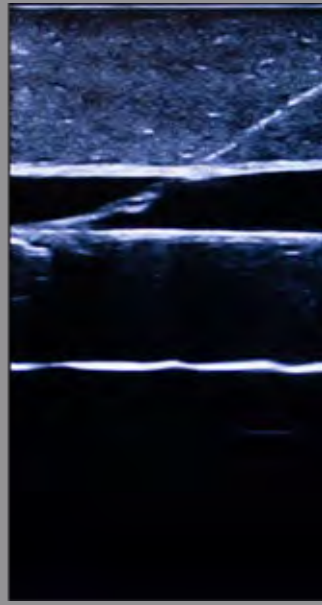
Similar products	Practices
SAEM-Rlas Replacement for Saem-Elas	1. Laser thermal ablation of varicose veins
SAEM-Rven Replacement for Saem-Elas	

RETURN TO INDEX

*See conditions of use and maintenance at the end of this catalog



SAEM-Elas
Display Image



Request product price at info@biotme.com
or by WhatsApp at +34 924 554 135



*The simulator is delivered with a protective sheet that must be used for its conservation that contains additional information for each simulator

SAEM-Eini

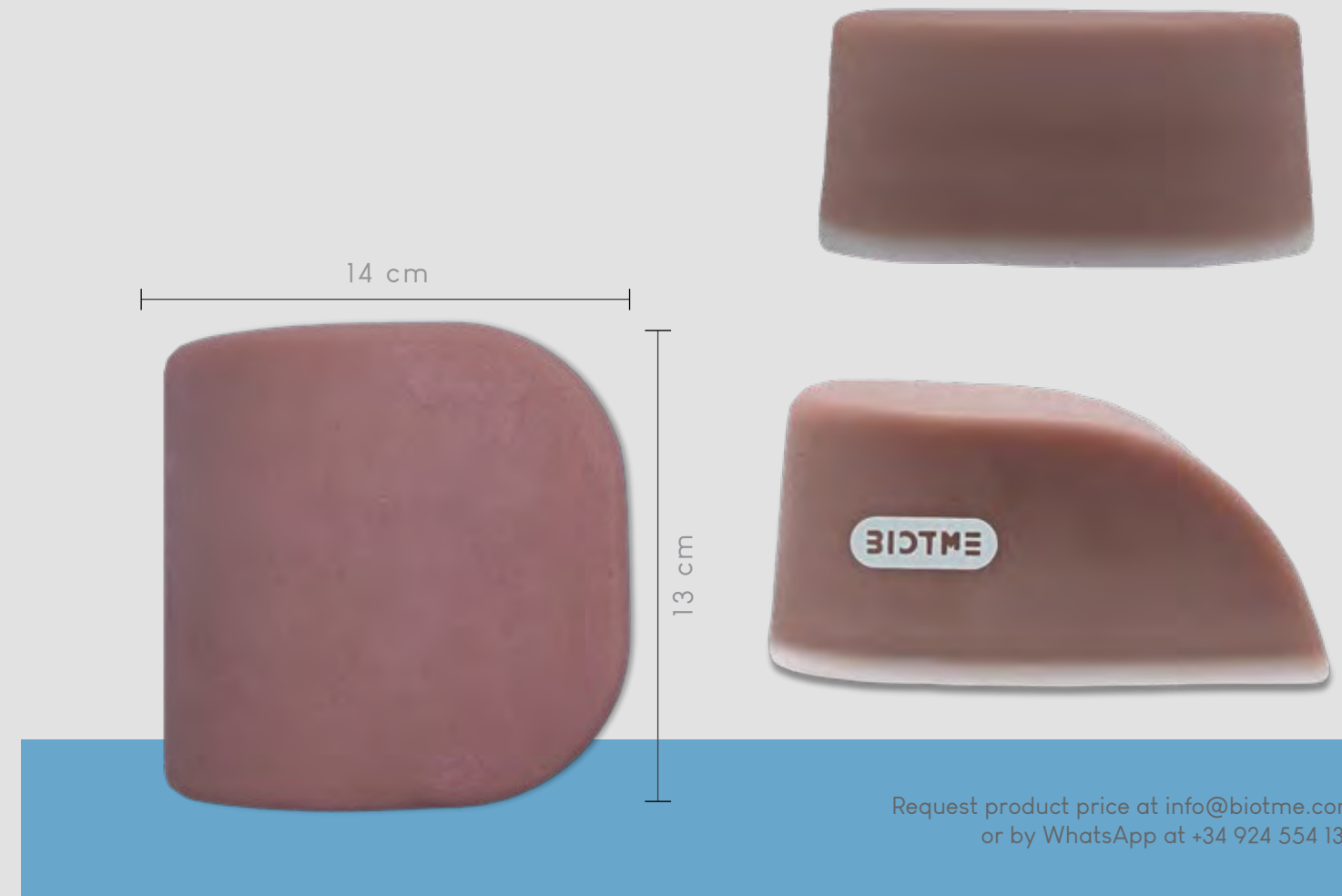
Basic medical training anatomical simulator for performing intramuscular injection practices. The simulator has a large storage capacity for injected liquid of 200 cm³, once the simulator is saturated with liquid, its content can be emptied through a valve incorporated in it, which allows a large number of practices. Allows needles up to 40 mm. in length, G21 recommended maximum. It is accompanied by an empty box to place accessories. Its interior is made with absorbent material. Compact, does not degrade over time, not losing volume. Washable with soap and water.

Similar products	Practices
SAEM-Aimg Intramuscular injections in the buttocks	1. Practice injections in the right regions 2. Management of the correct angle of insertion.

[RETURN TO INDEX](#)

*See conditions of use and maintenance at the end of this catalog

SAEM-E



Request product price at info@biotme.com
or by WhatsApp at +34 924 554 135

SAEM-Ealm

Field separating synthetic gel pads for ultrasound, Reusable for practices in areas of the body that are difficult to access and close to the field, replaces gels. It adapts to the area to be studied, recovering its shape once removed. It can be disinfected and cleaned with alcohol, bleach diluted in water or with soap and water.

Three units, rectangular 2 cm. thick, circular 1.5 cm. thick and square 1 cm. of husband.

Similar products	Practices
Lacks similar products	- To facilitate visualization on the ultrasound machine

[RETURN TO INDEX](#)

*See conditions of use and maintenance at the end of this catalog



Request product price at info@biotme.com
or by WhatsApp at +34 924 554 135

SAEM-A

ANATÓMICOS

Special simulators that reliably recreate, according to their function, the part of the body to which they refer. Among these models are the anatomical simulator of breasts with nodules and the simulator of intramuscular injections.

SAEM SPECIAL ANATOMICAL



SAEM-Amam

Realistic medical training anatomical simulator for locating and assessing nodules embedded in the trainer, using ultrasound and radiological techniques. It contains 5 nodules of different nature and sizes. Compact, does not degrade over time, not losing volume. The use of >G21 needles is recommended.

Excellent for developing and acquiring skills in diagnostic procedures under ultrasound or radiological control. Washable with soap and water. It is accompanied by an empty box to place accessories. It is not applicable for doing biopsies.

Similar products	Practices
	1Detection of nodules of three different types 2. Approach for removal of cyst fluid

RETURN TO INDEX

*See conditions of use and maintenance at the end of this catalog

SAEM-A



Request product price at info@biotme.com
or by WhatsApp at +34 924 554 135

SAEM-Aimg

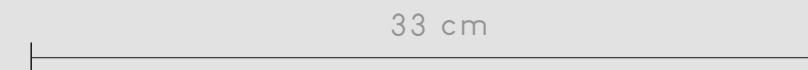
Anatomical medical training simulator for intramuscular injection practices. The trainer has a large storage capacity for injected liquid of 400 cm³. Once the simulator is saturated with liquid, its contents can be emptied through a valve built into it, which allows for a large number of practices. Allows needles up to 40 mm. in length, G21 recommended maximum. Manufactured with a BIOTME (GLB) development gel that simulates human tissues. Its interior is made with absorbent material. Compact, does not degrade over time, not losing volume.

Similar products	Practices
SAEM-Eini intramuscular injections	<ol style="list-style-type: none">1. Practice injections in the appropriate regions.2. Management of the correct angle of insertion..3. Evacuation by means of a valve of the injected liquid after multiple practices.

[RETURN TO INDEX](#)

*See conditions of use and maintenance at the end of this catalog

SAEM-A



Request product price at info@biotme.com
or by WhatsApp at +34 924 554 135

SAEM-Atecu

With the objective of learning the technique of amniocentesis and chorionic villi. The simulator comes with a sample of synthetic fabric made from our synthetic gel.

This kit contains the following items:

1. Female pelvis with pneumatic pump and sample container and membrane simulating skin.
2. Muscular layer and echogenic uterine layer
3. Amniotic sac, to be filled with water
4. Two fetuses, one at 12 weeks and one at 15 weeks
5. Hand pump
6. Rubric and control curve and learning evolution, this tool will allow us to have control of our degree of competence in the acquisition of the technique

Similar products	Practices
SAEM-Aeem Emotional ultrasounds	1. Practice of amniocentesis with fetuses in different phases of growth.
SAEM-Amam Breasts with pathologies	2. Chorionic villus harvesting

[RETURN TO INDEX](#)

*See conditions of use and maintenance at the end of this catalog

SAEM-A



SAEM-Atecu
amniocentesis technique



Request product price at info@biotme.com
or by WhatsApp at +34 924 554 135

SAEM-R

REPLACEMENTS

The SAEM-E and SAEM-tecu models consist of several interconnected modules or independent parts. In the SAEM-E in one of the modules the puncture is performed, and with the other, it is possible to perform the corresponding complete technique. This last module does not suffer during practices, which is why its durability is only limited by proper conservation. However, the module in which the puncture is performed does deteriorate with practice, so it is necessary to replace it. In this way, the cost per practice is reduced. This section details the replaceable modules of the simulators that allow it.

SAEM REPLACEMENTS



SAEM-Rpic

Replacement module for medical training anatomical simulator for picc and midline. The catheter insertion module is echorefringent to perform punctures, it has three tubeless vessels, which connect with the three tubed veins of the visualization module. Located 15mm from the outer surface with 8mm track diameters. Equipped with luer-lock outlets with plugs that allow evacuating or filling liquids, as well as connecting other accessories.

Similar products	Practices
SAEM-Epic PICC and Midline Techniques	Practices indicated in SAEM-Epic

SAEM-Rlas

Replacement module for medical training anatomical simulator for laser ablation of varicose veins. It is the replaceable module of the SAEM-Elas simulator.

Similar pro	Practices
SAEM-Elas Laser thermal ablation of varicose veins	Practices indicated in SAEM-Elas

SAEM-Rven

Replacement pack of 9 veins for medical training anatomical simulator for laser ablation of varicose veins, SAEM-Elas.

Similar products	Practices
SAEM-Elas Laser thermal ablation of varicose veins	Practices indicated in SAEM-Elas

*See conditions of use and maintenance at the end of this catalog RETURN TO INDEX

SAEM-R



Request product price at info@biotme.com
or by WhatsApp at +34 924 554 135

SAEM-Rpla

Placenta replacement module for SAEM-Atecu simulator.

Productos similares	Prácticas
	Practices indicated inSAEM-Atecu

SAEM-Rmus

Muscle layer replacement module for SAEM-Atecu simulator.

Similar products	Prácticas
	Practices indicated in SAEM-Atecu

SAEM-Rmem

Pack of 3 units of skin simulation membrane for SAEM-A tecu simulator.

Similar products	Prácticas
	Practices indicated inSAEM-Atecu

SAEM-Ramn

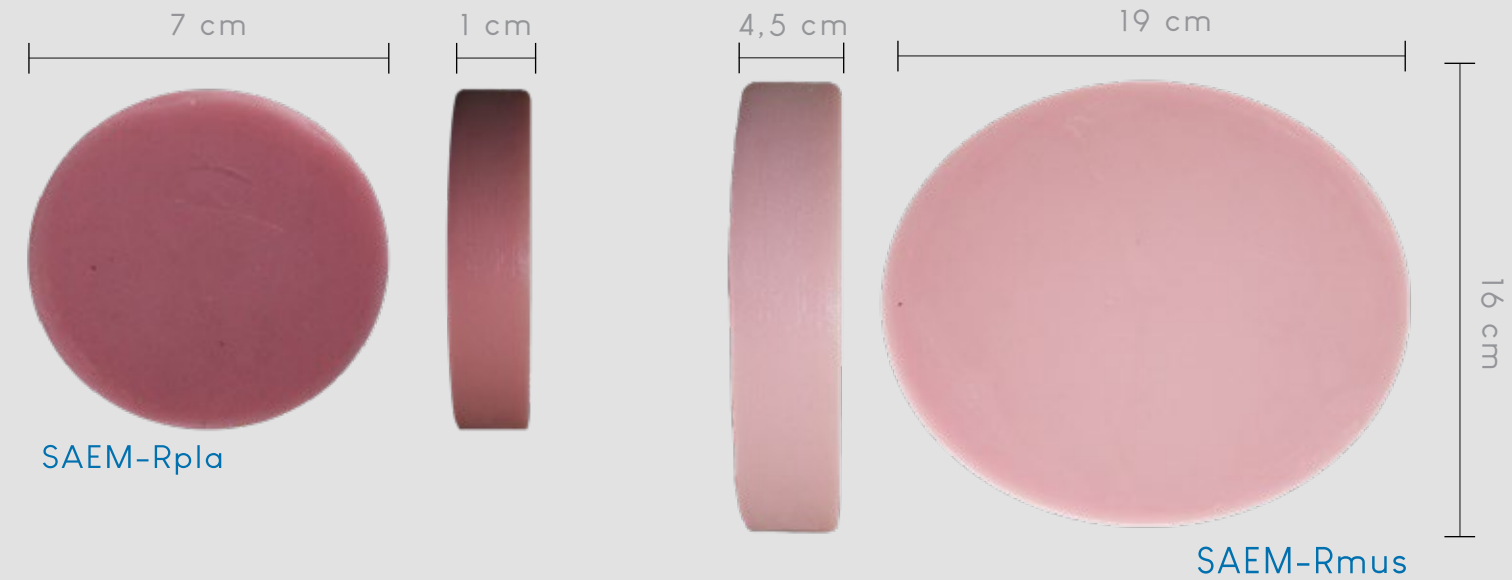
Pack of 10 units of amniotic bag.

Similar products	Prácticas
	Practices indicated inSAEM-Atecu

RETURN TO INDEX

*Ver condiciones de uso y mantenimiento al final de este catálogo

SAEM-R



Request product price at info@biotme.com or by WhatsApp at +34 924 554 135

SAEM-RM

SAEM-M line simulator without case and accessories.

Similar products	Práctices
	Practices indicated in the line of SAEM-M Simulators

SAEM-RL

SAEM-M line simulator without case and accessories.

Similar products	Práctices
	Practices indicated in the line of SAEM-L Simulators

RETURN TO INDEX

*Ver condiciones de uso y mantenimiento al final de este catálogo

SAEM-R



SAEM-RM

SAEM-RL

Request product price at info@biotme.com
or by WhatsApp at +34 924 554 135

SAEM-C

ACCESSORIES

In addition to the simulators and spare parts for the modules of some of them, we offer accessories to make training with our simulators more didactic and operational, in any of our ultrasound ranges.

SAEM ACCESSORIES

SAEM-Cssan

Similar blood to fill the lines of SAEM M, L, E type entrants with a capacity of 125 ml or 250 ml. Glass bottle. Product that does not decant.

Similar products	Practices
Lacks similar products	Complementary to all practices

SAEM-Cgel200

Bottle of soluble, hypoallergenic and non-greasy ultrasound gel in a 200 ml container with a mushroom-type dispenser.

Similar products	Practices
Lacks similar products	Complementary to all practices

RETURN TO INDEX

*See conditions of use and maintenance at the end of this catalog



Request product price at info@biotme.com
or by WhatsApp at +34 924 554 135

80

DEVELOPMENTS

1. SAEM
Anatomical Medical Training Simulators
2. MEDICAL EQUIPMENT
Non-invasive medical equipment
3. HEAT MOLDABLE SPLINTS
Removable Reinforced Thermoformable Splints
4. GEL 3D PRINTER
Gel 3d printer for complex organs
5. DESIGN AND CONSTRUCTION
Of microfluidic device for the production of flexible microcapsules

Biotme is a company where the engine is change and innovation. For this reason, our team works on the development of new ideas and products that help make the work of healthcare professionals easier, as well as improve the quality of the system and patient safety.

Our vocation is to make new products available to the market that help to improve, directly or indirectly, people's health, that facilitate the work of health workers and that preserve the safety of patients.

We have five lines of development.

The first, focused on our simulators to meet the needs of different medical specialties. We are currently developing different simulators for the digestive system, anesthesia, cosmetic surgery, etc.



On the other hand, we have a second line of development focused on non-invasive electrical and electronic equipment for diagnosis in real patients.


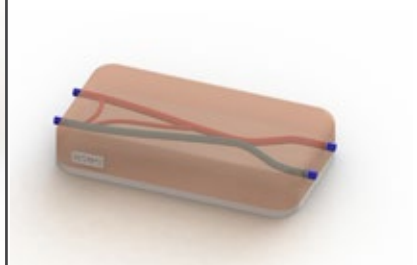
We are working on the development of personalized and thermoplastic reinforced removable orthosis variants, which can be placed at low temperatures, of which we participate in the utility model (ES 1276924 U). With the GEMA research group of the Uex, we are developing a 3D printer for our gel in order to reproduce complex organs for educational purposes, such as the heart, kidneys, complex vascularizations, aortic arches, etc.

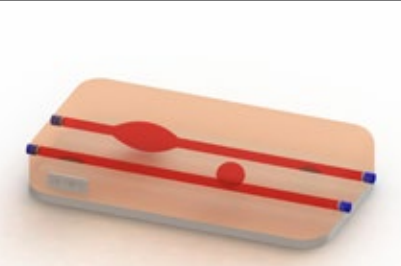
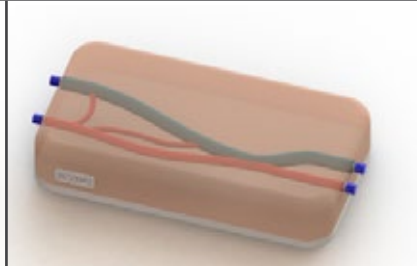
Finally, we are collaborating with the microfluidics research group in the Design and Construction of a Microfluidic Device for the Production of Flexible Microcapsules to see the behavior of red blood cells in the blood flow.

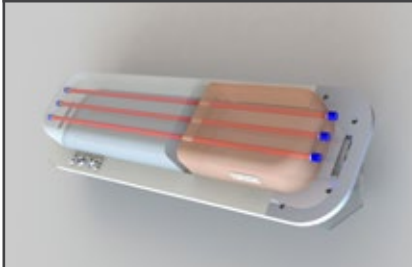
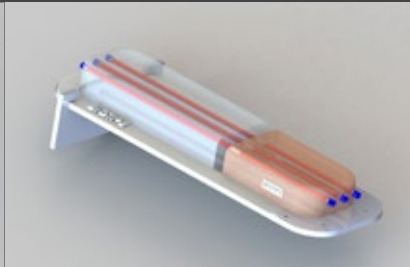
ANEXO

IMÁGENES RENDERIZADAS

SAEM-S	
	
SAEM-Scex	pág. 20
SAEM-Scex	pág. 20

SAEM-M	
	
SAEM-Macf	pág. 30
SAEM-Mfis	pág. 34

SAEM-L	
	
SAEM-Lane	pág. 40
SAEM-Lfis	pág. 42

SAEM-E			
			
SAEM-Epic	pág. 48	SAEM-Elas	pág. 52

CONDITIONS OF USE

HUMIDITY	
Transport	<80% HR
Storage	<80% HR
Service	<80% HR
TEMPERATURE	
Transport	(>0 C < 60 C) (>32 F < 140 F)
Storage	(>0 C < 35 C) (>32 F < 95 F)
Service	(>0 C < 30 C) (>32 F < 86 F)

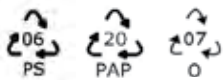

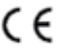
PRECAUTIONS

Do not subject to conditions higher than those indicated. For professional use only and only valid as a defined trainer. Keep out of the sight and reach of children.

RECYCLING

At the end of the useful life of the product take a mineral waste management company.

SYMBOLS

	 
DEVELOPED AND MADE IN SPAIN	

PRODUCT PROPERTIES

Boiling Point	300 - 450 C
Melting Point	No se especifica
Relative Density	0.89
Solubility in Water	No soluble
Appearance	Sólido e inoloro
Flash point	>180 C >356 F

HEALTH EFFECTS AT ROOM TEMPERATURE

Skin	Contact with it is not expected to cause irritation under normal use.
Eyes	In direct contact the eyes may become irritated, but only slightly.
Inhalation	This material has a fairly low vapor pressure and an inhalation hazard is not expected.

HEALTH HAZARDS

Ingestion or aspiration of a large dose or repeated small doses of the oil can cause lipid pneumonia or lipid granuloma of the lung. The aspiration of oil vapors will only occur if the equipment is subjected to parameters higher than those of use specified.

EMERGENCIES AND FIRST AID

Contact with skin	If it comes into contact with the skin when the material is melted, treat as a common burn. This material does not arritate the skin.
Inhalation	Product is not expected to irritate the nose, throat, or respiratory tract.
Ingestion	The acute toxicity of the product is low.

ANTI-FIRE MEASURES

Specific Hazards	Extinguishing Agents
Toxic gases may form when the product is burned without sufficient oxygen.	Water spray, foam, dry powder or CO2

SPECIAL PROCEDURES AND PRECAUTIONS

The material will not burn unless it has been preheated. Do not enter the site of the fire without full bunker gear (helmet with mask, bunker clothing, gloves and rubber boots), including self-contained breathing apparatus. Cool containers exposed to the fire with water.

DISPOSAL OF WASTE

All the products in this catalog, including their containers and packaging, once acquired are the property of the buyer and the buyer is solely responsible for their disposal. The buyer must take the appropriate measures to dispose of waste in a safe way, respectful of people and the environment and in accordance with the applicable legal provisions.

GENERAL CONDITIONS OF CONTRACT

These General Contract Conditions -hereinafter CGC-, regulate the purchase conditions of the different products offered on the web: www.biotme.com, property of BIOTME S.L., CIF. N. B06717466. Addressed at Avda. de la Estación 10 P1 1 A 06300 ZAFRA (Badajoz) SPAIN and those offered in the catalog located on the aforementioned website.

These conditions of sale will govern the relationship between BIOTME S.L. and the CLIENT, and replace any other term appearing in this or any other document unless specifically stated otherwise in writing and by the management of BIOTME S.L.

Thus, these conditions of sale cancel and exclude any other stipulation incorporated by the CLIENT, either in the order itself, or during any type of negotiation or commercial transaction in progress.

CUSTOMERS who make purchases from BIOTME S.L. They fully accept these GTC and will be bound by them, as if they were written at the time of hiring/purchase. It will be an essential requirement to read and accept the CGC, prior to the purchase of any product. These CGC will be expressly mentioned in the budgets and offers that are made.

BIOTME S.L. reserves the right to modify the GTC at any time and without prior notice. The CGC will always be accessible from the website, so that the user can consult or print them at any time.

The prices and conditions of sale will be maintained during the validity of the offer or budget presented to the CLIENT, and may vary after this period in response to market fluctuations. The validity of this will be specified in all budgets or offers.

Once the order has been formalized, the purchase will be understood to have been fully completed, with all the legal guarantees that protect the purchasing consumer and, from that moment, the prices and conditions will be contractual and may not be modified without the express agreement of both contracting parties. . Spanish will be the language used to formalize the contract, or in another language by mutual agreement between the parties. The electronic document in which the contract is formalized will be archived and the user will have access to it in their CLIENT area if it exists.

BIOTME S.L. reserves the right to deny and/or suspend access to the services provided at www.biotme.com for reasons of breach of contractual good faith, breach of the applicable legislation, of these General Conditions of Purchase and/or in assumptions of fraud detected by this company and/or any of its suppliers.

The CUSTOMER will have 72 hours to verify the integrity of all the components of the order and to verify that everything is included in the included products. After these 72 hours, the shipment will be accepted and no claims will be accepted for damage or failure with the shipment.

An order will be considered delivered when the delivery receipt is signed by the CUSTOMER. In case of receiving a product damaged by transport, it is advisable to contact us within the first 24 hours to be able to claim the incident from the transport company. In the same way, it is convenient to leave a record to the transport company. After this time, the product would benefit from the guarantee conditions of BIOTME S.L. detailed in this document.

If the CUSTOMER does not make such notification, it will be definitively assumed that the products are, in all respects, in accordance with the contract and free from any defect that is evident in a reasonable examination, and consequently, it will be considered that the CUSTOMER has accepted the products.

Except in the event that it contradicts the foregoing, under no circumstances will BIOTME S.L. will have the obligation to compensate the CUSTOMER for damages or for the lack of delivery or delay in the delivery of the products for whatever reason, or for any consequential or other loss arising from the lack or delay in delivery.

Deliveries will be made to the delivery address indicated in the order, by the means of transport and carrier chosen by BIOTME S.L. The CUSTOMER also has the possibility of picking up his order at the address of BIOTME S.L., being exempt from any responsibility for damages or delays in the event that the buyer chooses the carrier.

Logistics costs for the Iberian Peninsula and the Balearic Islands will be free for orders over 150 euros. For other destinations, these expenses will be specified and if they are assumed by BIOTME S.L. or by the CLIENT. For international orders, the INCOTERM to be applied will be negotiated.

In case of refusal to take charge of the products we acquired in the agreed terms, the buyer must return to BIOTME S.L. the delivered goods, without any undue delay and, in any case, no later than within 3 calendar days. In addition, you must do it in the original packaging, including the manuals corresponding and original accessories if any. In such a

case, the buyer will bear the direct costs of returning the goods.

The buyer will be responsible for the decrease in value of the goods resulting from their handling or use other than that necessary to visually check their good condition.

When accepting the budget, the CUSTOMER must return it signed by electronic means to the email that appears in it, it is assumed that the CUSTOMER knows and accepts the general conditions of sale that appear in our catalog in force on the date of placing the order.

All of the above without prejudice to what is established for these purposes in the Consolidated Text of the General Law for the Defense of Consumers and Users (TRLGDCU) in relation to the sale of consumer goods to consumers, which establishes several options to be able to exercise the right of withdrawal. Among them, it contemplates the possibility of doing so by filling out a form electronically. In order to shorten the time and so that you can make the return in a comfortable way and without delay. In accordance with this legislation, it is possible to cancel the contract concluded, without the need to justify such decision and without penalty of any kind, within a period of 14 calendar days from the reception of the merchandise by the CLIENT. For this, the corresponding withdrawal conditions must be met. What is stated without prejudice to what is expressed below, given that the activity of BIOTME S.L. It is not aimed at final consumers, but at professionals, businessmen, administrations and non-profit entities.

The addresses and emails for the purposes of notification between the parties, will be those that appear in the budgets, offers or invoices issued by BIOTME S.L.

RETURN CONDITIONS

- Without prejudice to what was previously stated in this document:
- Such returns will be processed as a commercial return, as there is no law that regulates the rights of return between companies, and said procedures are regulated according to the conditions of BIOTME S.L.
- Returns of products in blister or heat-sealed, and other products that have a broken factory security seal will not be accepted.
- Said conditions do not cancel the right to warranty or exchange of defective products. BIOTME S.L. reserves the right to deny the return in case of detecting any anomaly in the returned product.

WARRANTY

The guarantee does not cover those defects caused by incorrect use of the product and/or manipulation of it other than that necessary to establish its nature, characteristics or its operation. In these cases, the CUSTOMER must be responsible for its repair. Therefore, the following are excluded from the guarantee:

- Defects and deterioration caused by external events, accidents, mainly electrical accidents, wear and tear and use not in accordance with the instructions of BIOTME S.L.
- Products modified or repaired by the CLIENT or any other person not authorized by BIOTME S.L. as well as the products that are the subject of a specific support contract.

In general, the warranty period is 2 years from the time of purchase. For this, it is essential to have the purchase receipt or similar, which will serve the user to demonstrate that the product was purchased from BIOTME S.L. and the date of acquisition. The product must be returned properly packed to the address of BIOTME S.L.

The activities of BIOTME S.L. they are of a professional nature and are aimed at businessmen, professionals, Administrations and entities, for profit or not, never at end consumers. For this reason, the catalogue, website or any other promotional material prepared by BIOTME S.L. is intended exclusively for this group who, when ordering, wish to obtain the supplies for business and/or professional reasons, and never as a consumer.

TRANSFER OF OWNERSHIP AND RISK

The risk of loss or damage to the products will be transferred to the CUSTOMER at the time of delivery, either to him or to the carrier chosen by him. On the contrary, the ownership of the products will not be transferred to the CLIENT until all the sums owed to BIOTME S.L. by the CLIENT, have been paid.

Except when payment is made in full before delivery of the product, the entire price will not be considered paid until the check or any other payment instrument provided by the CLIENT has been presented or paid according to its terms.

Failure to pay the amounts owed for price and expenses by the buyer will result in the termination of the contract at the seller's request. Failure to deliver the good by the seller will result in the termination of the contract at the request of the buyer.

PAYMENT OF THE PURCHASED PRODUCTS AND DELIVERY TIMES

The method of payment of the CLIENT's products to BIOTME S.L will be by default by advance payment, the agreed delivery period will begin at the time of confirmation of payment by the CLIENT. In special cases, other forms of payment may be agreed, always within the framework of Spanish legislation.

The default delivery time will be 5 calendar days from the confirmation of payment, or from the reliable confirmation of the order in case of deferred payment. This period is understood from the time the order is placed until it leaves BIOTME's facilities. The time it takes for the logistics company to deliver the order is not counted in any case. Nor, in his case, of the time that the customs procedures last.

If BIOTME S.L. is unable or prevented from performing any contract due to any cause beyond reasonable causes or because of its inability to provide products required for the performance of the contract except at a higher price. may, at its sole discretion, delay performance of the contract or cancel it in whole or in part. BIOTME will not be held responsible for such delay, cancellation or inability to deliver any order. In particular, and although it will use all reasonable efforts to deliver the orders on the established date, in no case will it be held responsible for delays, cancellations or inability to do so.

DATA PROTECTION

Both the personnel responsible for BIOTME S.L. and the CLIENT are obliged to comply with all current legal obligations regarding data protection that are applicable, and specifically as provided in article 28.3 of Regulation 2016/679 on Data Protection (hereinafter, the "RGPD"), which establishes that it must.

Process personal data only following documented instructions from the controller, including with respect to transfers of personal data to a third country or an international organization, unless it is obliged to do so under the Law of the European Union or Spain that applies to the person in charge. ; in such case, the person in charge will inform the person in charge of that legal requirement prior to the treatment, unless said Law prohibits it for important reasons of public interest;

Guarantee that the persons authorized to process personal data have been obliged to respect confidentiality or are subject to a confidentiality obligation of a statutory nature.

Take all necessary technical and organizational measures, in accordance with article 32 RGPD;

Respect the conditions indicated in sections 2 and 4 of art.28 RGPD to resort to another person in charge of the treatment;

Assist the person in charge, taking into account the nature of the treatment, through appropriate technical and organizational measures, whenever possible, so that it can fulfill its obligation to respond to requests that have as their object the exercise of the rights of the data subjects. interested parties established in chapter III RGPD;

Help the person in charge to guarantee compliance with the obligations established in articles 32 to 36 RGPD, taking into account the nature of the treatment and the information available to the person in charge;

At the choice of the person in charge, it will delete or return all the personal data once the provision of treatment services has ended, and will delete the existing copies unless the conservation of personal data is required under the Law of the Union or of the States. members; Y

It will make available to the person in charge all the information necessary to demonstrate compliance with the obligations established in this clause, as well as to allow and contribute to the performance of audits, including inspections, by the person in charge or by another auditor authorized by said person in charge. 3. OWNERSHIP AND

The person in charge will immediately inform the person in charge if, in his opinion, an instruction violates the RGPD or other provisions regarding data protection of the European Union or Spain.

ENVIRONMENTAL WASTE MANAGEMENT

All the products that the CLIENT acquires from BIOTME S.L., including their containers and packaging, once acquired, are the property of the buyer and he is solely responsible for their disposal. The buyer must take the appropriate measures to dispose of waste safely, respectfully with people and the environment and in accordance with the applicable legal provisions. In the case of the gel that is part of the simulators, the CUSTOMER may send this product, assuming the costs of logistics, to the facilities of BIOTME S.L., who will be in charge, in accordance with current Spanish legislation, of waste management. .

INTELLECTUAL PROPERTY RIGHTS

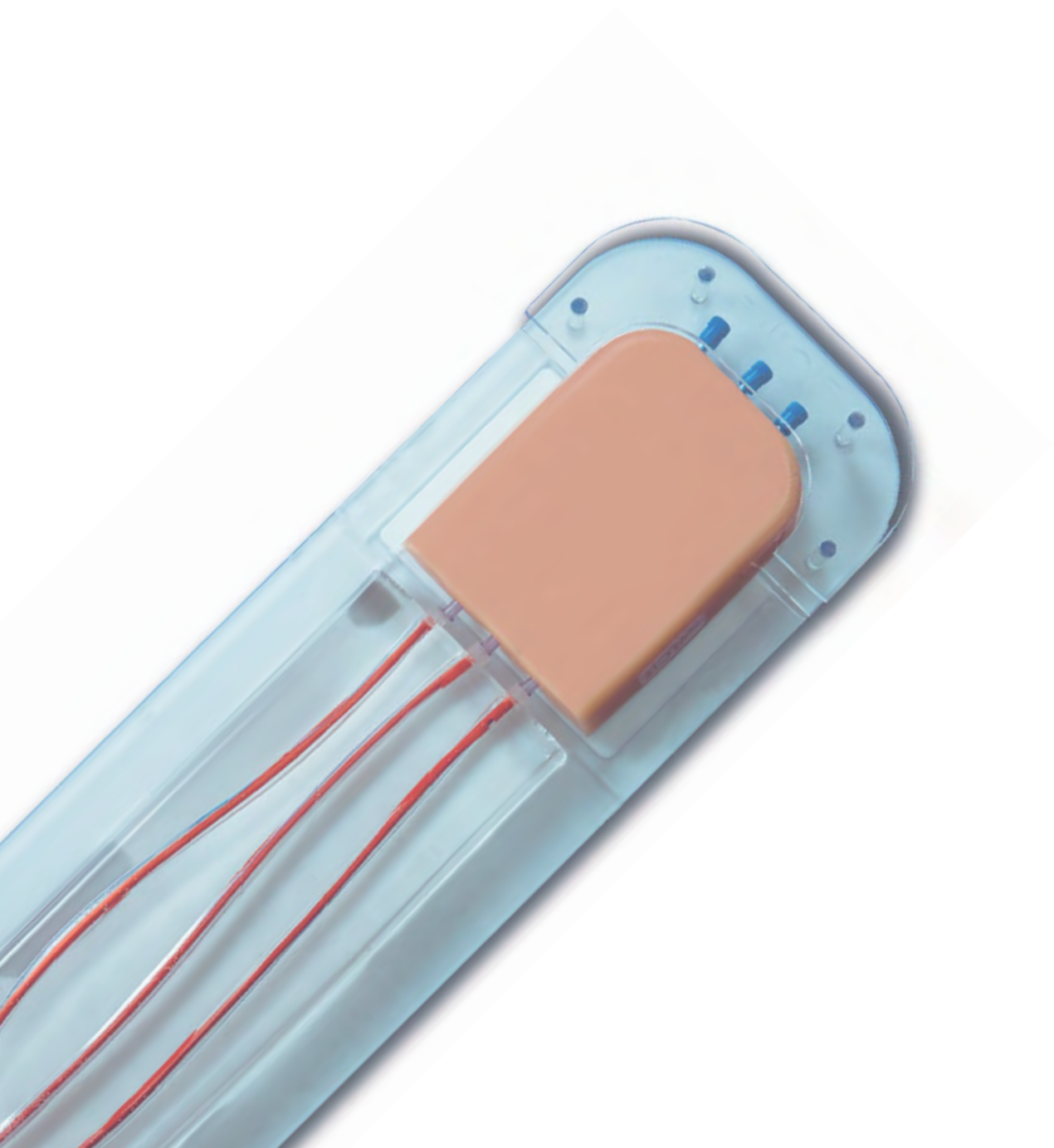
The CLIENT shall at all times respect the international legislation on intellectual and industrial property, exploitation, etc. in its relationship with BIOTME S.L. products, being forced to communicate the content of this section to third parties.

APPLICABLE LEGISLATION

The commercial relationship between BIOTME S.L. and the CLIENT will be subject to and interpreted in accordance with the laws of Spain and will be subject to the exclusive jurisdiction of the Courts of Spain.

BIOTME

The data contained in this catalog is regularly updated according to the needs and demands of the market, in addition to the result of the research and development work of BIOTME S.L., therefore reserving the right to modify any of the characteristics of its products. It is the responsibility of the product selection manager to choose those suitable for each application, and adjusted to the applicable regulations in each country. BIOTME S.L., declines all responsibility due to improper use of the product or unforeseen circumstances in its use.



CONTACT

+34 924 55 41 35

+ 34 609 36 80 82

info@biotme.com

Avda. de la Estación, 10. P1 1A
06300, Zafra (Badajoz) España

www.biotme.com



@biotme

BIOTIME

Medical Training Models